

# NegoRack®

1/4/8-Port Short Depth PS/2-USB VGA Single Rail  
WideScreen LCD KVM Switch



## USER MANUAL

**NR-MSR2701S/NR-MSR2704S/NR-MSR2708S**

## User Considerations

The manufacturer has the right to modify and change the information, documents and specification tables contained in the manual without prior notice. The manufacturer will not warrant, express, imply or legally declare its contents or specifically deny its marketability and applicability for special purposes. The same applies to any sold and licensed manufacturer's software described in this manual. If any defects in the software program are found after purchase, the Purchaser (and non-manufacturers, their distributors or their purchasers) will be required to bear all necessary services, maintenance costs and any accidental or indirect damages caused by the software defects.

The manufacturer is not responsible for any radio and/or television interference caused by unauthorized adjustment of this equipment, and the user must correct the interference himself.

If the operating voltage setting is not correctly selected before operation, the manufacturer will not be responsible for any damage caused.

**Make sure that the voltage is set correctly before use.**

## Product Model Description:

Model	Configuration Description
NR-MSR2704ULS	4 input (VGA&USB&PS.2), HD 17-inch LCD VGA display, touch pad mouse, 101 standard keyboard, front USB interface, support cascade, support HUB function.
NR-MSR2708ULS	8 input (VGA&USB&PS.2), HD 17-inch LCD VGA display, touch pad mouse, 101 standard keyboard, front USB interface, support cascade, support HUB function
NR-MSR2701ULS	1 input (VGA & USB), HD 17-inch LCD VGA display, touch pad mouse, 101 standard keyboard, front USB interface, support cascade, support HUB function

## Packaging Contents

The multi-computer KVM switcher package includes the following contents:

- ◆ LCD KVM Switcher Host x 1
- ◆ KVM Dedicated Connection Cables x1, 4, 8
- ◆ Power adapter x1
- ◆ Power cord x1
- ◆ Rack mounting kit x 1
- ◆ Fixing screw pack x 1

Check and make sure that all parts are present and not damaged in transit. If you encounter problems, please contact your dealer.

In order to prevent damage to the machine or the device connected to the machine, please read this manual carefully and follow the instructions for installation and operation.

---

\* Since the publication of this manual, there may be new product features. Please visit our website [www.nigorack.cn](http://www.nigorack.cn) to download the latest version of the user manual.

---

## Contents

---

About this Manual.....	6
Chapter I Introduction.....	8
Product Introduction.....	8
Product Characteristics.....	9
Hardware Requirements.....	9
Remote User Computer.....	9
Server.....	10
Operating System.....	10
KVM Dedicated Connection Cable.....	10
Operating System.....	11
Components.....	12
Front View.....	12
Rear View.....	13
Chapter II Hardware Installation.....	15
Stacking and Installation.....	15
Single Device Installation.....	15
LCDKVM All-in-One Product Schematic Diagram.....	17
Standard Rack Mounting.....	18
Chapter III Basic Operations.....	25
Hot Plug.....	25
Hot Plug PC Connection Port.....	25
Hot Plug Control End Connection Port.....	25
Connection Port Selection.....	25
Local OSD Menu Screen Selection.....	25
Power Shutdown and Restart.....	26
Chapter IV OSD Operation.....	27
OSD Introduction.....	27
OSD Login.....	27
OSD Hotkey.....	27
OSD Main Menu.....	28
OSD Main Menu Title.....	28
Introduction to OSD function keys.....	29
F1 GOTO:.....	29
F2 SCAN.....	30
F3 LIST.....	30
F4 QV.....	31
F5 EDIT.....	31
F6 SET.....	32
Appendix.....	38
Product Specification Parameters.....	40
VGA Interface Family Short LCD KVM Switcher Parameters.....	40

# About this Manual

---

This user manual would assist you to effectively use product functions, including device installation, setting and operation procedures. You can understand the contents of this manual from the following contents:

**Chapter 1 Introduction-**This chapter introduces the rack KVM device system, including its functions, features and advantages, and describe and introduce its front and rear panel components.

**Chapter 2 Hardware Installation-**This chapter explains how to install this product and its necessary steps-including basic stand-alone installation, multi-switch level connection installation, and extended installation of IP modules.

**Chapter 3 Basic Operation-** This chapter explains the basic operation concept of KVM switcher.

**Chapter 4 OSD Menu Operation-** This chapter introduces KVM OSD Menu Operation Method.

**Appendix-**Mainly provides specification table and other technical information related to KVM switches.

## Explanation of Common Terms

---

Symbols	Represent text information that should be entered
【】	The brackets indicate the key you want to enter. For example, <b>【Enter】</b> means that the Enter key is pressed. For keys that need to be entered at the same time, they are placed in the same brackets, and the keys are connected by plus signs. For example: <b>【Ctrl+Alt】</b>
1.	The number indicates the serial number of the actual operation step.
◆	Rhombus indicates that information is provided for reference, but are independent of the operation steps.
●	The origin symbol represents the classification sub-item information and is independent of the operation step.

## Explanation of Special Terms

---

This manual uses Local and Remote terms to describe the operator and equipment side in the KVM over IP switch installation architecture. According to different angles, under certain conditions, users and servers can be regarded as local and under other conditions as remote:

From switch

ÿ **Remote User**-When a user logs into the switch from a location far away from the switch over the network, we treat the user as a remote user.

ÿ **Local Control Terminal**-The keyboard, mouse and display directly connected to the switch.

ÿ **Server**-The server connected to the switch via the KVM module cable.

From the user

ÿ **Local Client User**-When a user is sitting in front of his computer and operating on a server connected to a switch far away from him, we treat the user as a local client user.

ÿ **Remote Server**-From the user's point of view, we call the server a remote server——Although the server is directly connected to the switcher, it is far away from the user.

When we describe the overall system architecture, we usually adopt the perspective of switcher-in this case, the user will be regarded as remote; When we describe the user's operations using browsers or applications through the network, we usually adopt the user perspective-in this case, the switch and the servers connected to it will be considered remote.

## Product Information

---

To find information about our KVM products and how to use them effectively, you can contact our website or authorized distributors for more contact information.

# Chapter I Introduction

## Product Introduction

---

The 1/4/8 port USB, PS2 rack Mini LCD KVM multi-computer switch is a multi-function device that allows managers to access 1/4/8 VGA computers from a set of USB keyboards, mice or a set of PS2 keyboards, mice and controls. It supports two-level port cascade can manage up to 128 computers from a single control terminal;

In addition, the function can be expanded according to the needs of users and changed to the transmission control mode of KVM OVER IP. Only an IP KVM conversion module needs to be connected outside the product to upgrade to the digital KVM management device managed by remote network, which is convenient for users to quickly upgrade the application of advanced control mode without changing the existing use environment.

Four convenient ways are provided to switch computers in the installation architecture: (1) Use the connection port selection key on the front panel of the switch; (2) inputting hot key combinations from the keyboard; (3) Select from the menu on screen display (OSD). The automatic scanning function provides automatic scanning and monitors computers in the installation architecture one by one. (4) Remote network control operation is carried out through the network port of the extended IP module to connect the computer above KVM.

The installation of this product is very fast and tolerant, as long as the connection line is connected to the appropriate connection port, no software setting is required, no complicated installation procedures are required, and there will be no incompatibility problems. Since the device can directly obtain the input data of the keyboard, it can operate on a variety of operating platforms (compatible with PC, Mac, Sun, etc.).

Since it is allowed to manage computers connected to it from a single control terminal, the installation of a set of KVMs (1) can exempt each computer from the expense of purchasing individual keyboards, displays and mice; (2) Save the space occupied by additional device; (3) saving energy cost; (4) Avoid the inconvenience and waste of moving back and forth between computers. (5) Rapidly upgrade to the remote network control mode of IP control mode.

Digital KVM switcher is an intelligent device that provides IT administrators in large server rooms with efficient management and access control of multiple servers. Switch is an IP-based KVM control device that allows local and remote operators to monitor and access multiple servers from a single set of control terminals. The KVM over IP switch provides ultra-high video quality with resolutions up to 1920x1200 and can access USB-driven devices through high-speed virtual media transmission.

The client software allows the operator to exchange keyboard, display and mouse signals with the server connected to the switch, as if the operator were directly beside the device for operation. Administrators can easily handle many maintenances tasks-from installing and executing GUI applications to troubleshooting at BIOS level, routine monitoring and synchronous maintenance, system management, restart and even pre-start functions.



## Product Characteristics

- 
- ◆ One set of USB control terminals can manage 1, 4 or 8 VGA interface computers
  - ◆ Ultra-short fuselage with a fuselage length of only 360MM
  - ◆ The control terminal supports USB interface type keyboard and mouse devices
  - ◆ Up to 128 computers can be controlled in cascade two levels w
  - ◆ You can switch computers through front panel keys, keyboard hotkeys and on screen display (OSD).
  - ◆ BIOS level access connected to that control device without worrying about the risk of virus and Trojan intrusion
  - ◆ The accused computer does not need to install any software and drivers, and the accused computer directly recognizes KVM.
  - ◆ Remote network control mode can be upgraded by extending the IP KVM module
  - ◆ Support OSD to set user login mode and add KVM login security requirements
  - ◆ Supports DDC communication and adapts to various graphics card devices.
  - ◆ The automatic scan function monitors all computer operations
  - ◆ Supports cross-platform operations-Windows, Linux, Mac\* and Sun\*
  - ◆ The keyboard and mouse connection port of the controlled computer adopts Keep Online technology to simulate the keyboard and mouse, the device is safe and stable, and the switching is fast without delay.
  - ◆ The controlled display screen can perform the function of window stepless zoom and display in any proportion or size.
  - ◆ Multi-window superposition technology can display multi-window pictures on the desktop of the same remote control end, and select and control any window.
  - ◆ Convenient and friendly remote login mode, Web page access and related settings and queries are carried out through browsers.
  - ◆ Three user level settings and multi-user grouping settings are suitable for various management requirements.
  - ◆ The remote control desktop can set two different mouse application modes w according to the user's usage habits.

## Hardware Requirements

### Remote User Computer

If the expanded KVM module is replaced and can be used by remote users, the remote user computer (also known as the client computer) is the computer that users use to log in to the switch remotely through the network. These computers must be equipped with the following device:

- ◆ For best results, we recommend that you use a computer with a CPU of at least P4 1.7 GHz processor and a display resolution of 1024 x 768 or above
- ◆ IE10 or above Web Browser
- ◆ Ensure usage efficiency, we recommend that the Internet be connected at a minimum speed of 10Mbps.

- ◆ Windows XP and above are recommended for the operating system.

## Server

The server is a computer connected to the switch through KVM dedicated cables. The following device must be installed on these servers:

- ◆ W A set of VGAs, SVGA ports
- ◆ W USB KVM Cable Connection: A set of Type A USB ports to the USB Master Controller.
- ◆ PS/2 KVM Module Cable Connection: 6-pin mini-DIN Keyboard and Mouse Port.

## Operating System

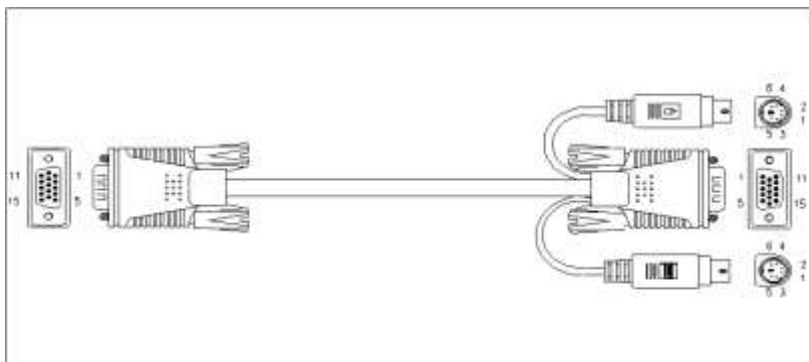
- ◆ Operating systems supported by remote users' computers include Windows XP and above
- ◆ The operating systems supported by the server connected to the switcher are shown in the following table:

Operating System		Version
Windows		Windows 2000/XP/2003/2008/Vista/7/10
Linux	RedHat	9.0 or higher
	SuSE	10/11. 1 or higher
	Debian	3.1/4.0
	Ubuntu	7.04/7.10
UNIX	AIX	4.3 or higher
	FreeBSD	5.5 or high
	Sun Solaris	8 or high
Mac		OS 9.0 to 10.6 (Snow Leopard)
Novell	Netware	6.0 or high

## KVM Dedicated Connection Cable

KVM device provides a variety of connection cables to choose from according to the user's usage:

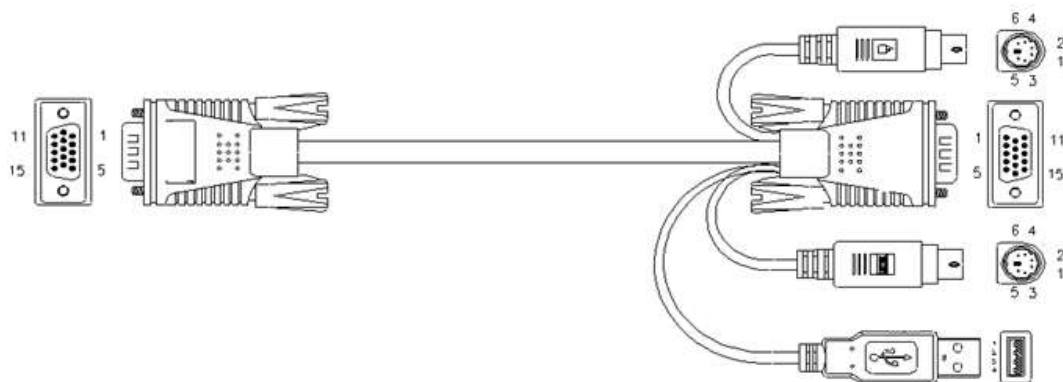
- ◆ PS2 dedicated cable VGA+PS2 keyboard (purple) + PS2 mouse (green)



◆ USB dedicated cable VGA + USB (Type A)



◆ WUSB and PS2 hybrid dedicated cable VGA + USB (Type A) + PS2 keyboard (purple) + PS2 mouse (green)



**Note:** Cable length will affect the quality of the display screen. If you need another length of cable, please contact the merchant you purchased to purchase the cable suitable for this switch.

## Operating System

Operating System		Version
Windows		Windows 2000/XP/2003/2008/Vista/7/10
Linux	RedHat	9.0 or higher
	SuSE	10/11. 1 or higher
	Debian	3.1/4.0
	Ubuntu	7.04/7.10
UNIX	AIX	4.3 or higher
	FreeBSD	5.5 or high
	Sun Solaris	8 or high
Mac		OS 9.0 to 10.6 (Snow Leopard)
Novell	Netware	6.0 or high

For more operating system support, please pay attention to the latest product compatibility related versions.

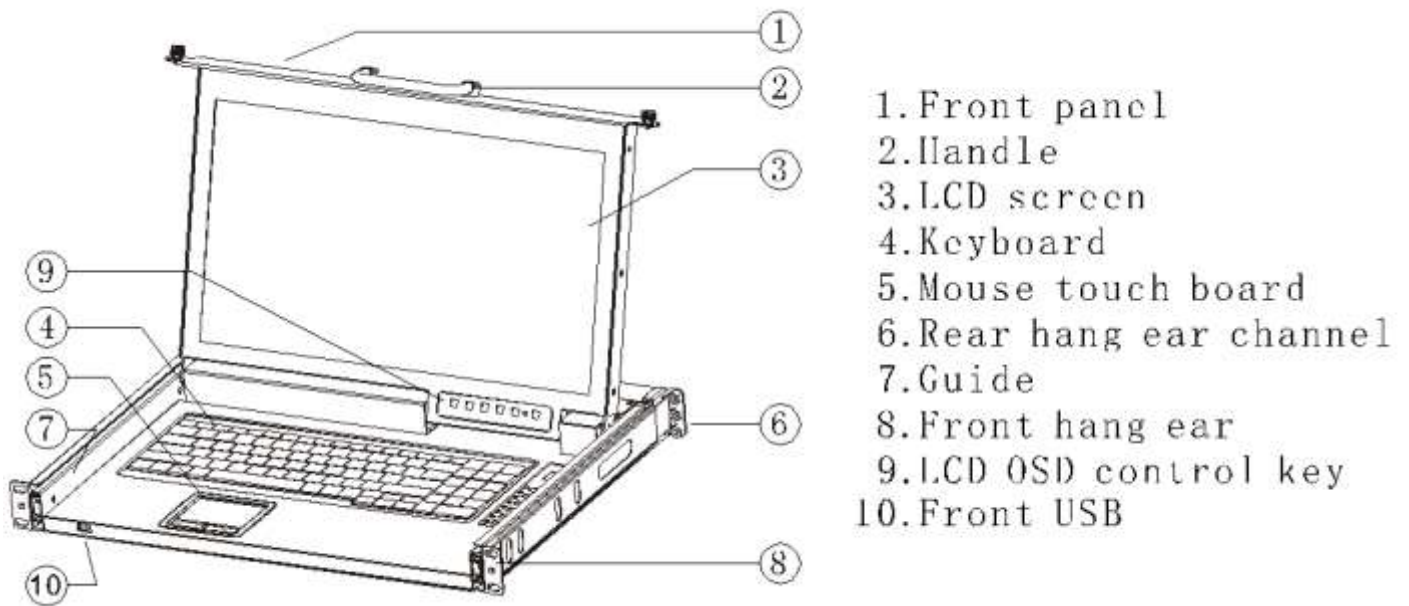
## Components

---

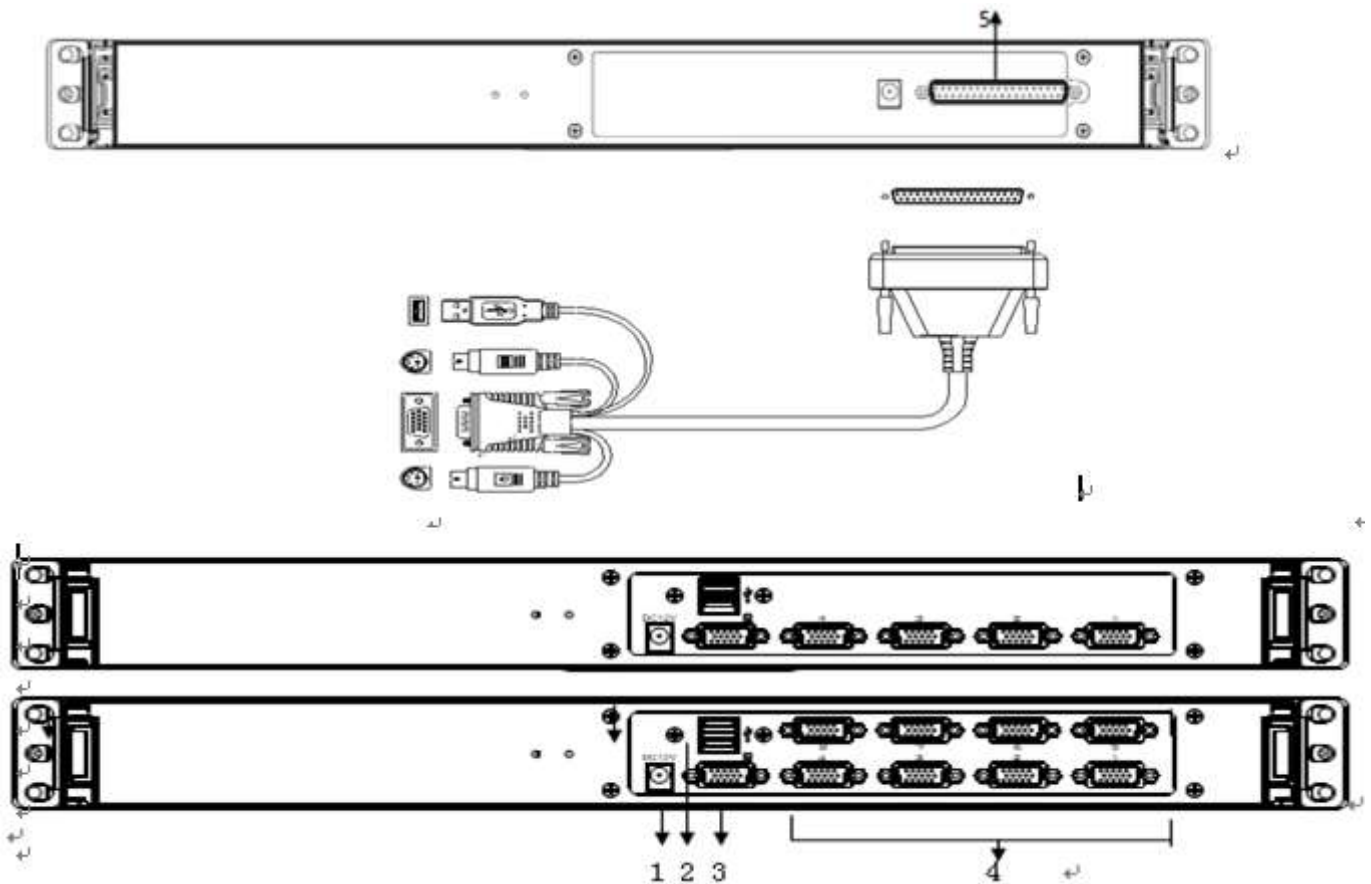
### Front View



KVM Panel Front View



## Rear View



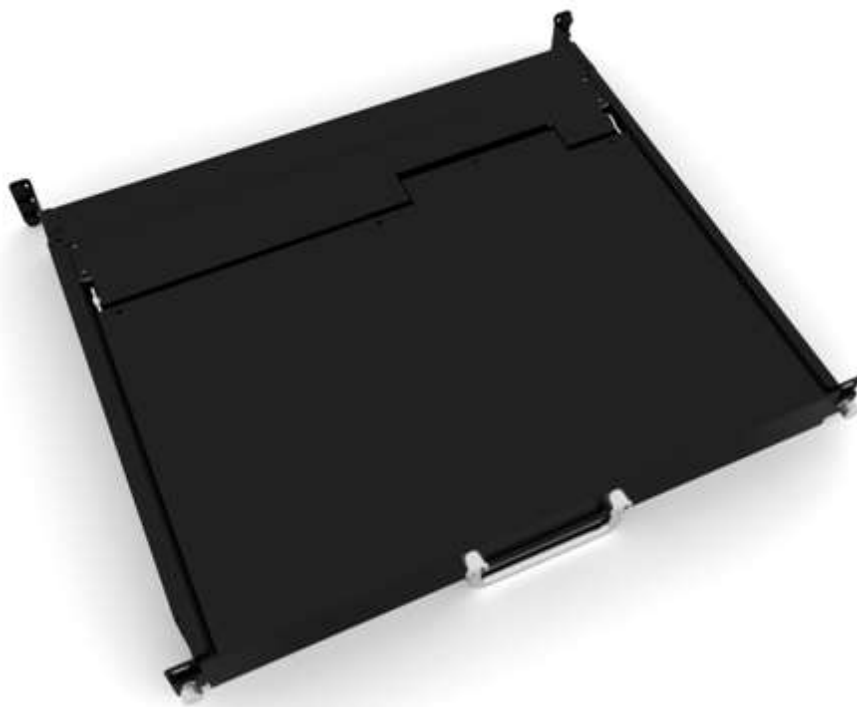
KVM Rear View

No.	Components	Function Description
1	Power Interface	Connect the device's power adapter to this interface. (Please use the DC12V power supply dedicated to this device)
2	USB keyboard and mouse interface	Connect the local USB keyboard and mouse interface, USB TYPE A type.
3	VGA Local Output Port	Connect to a local VGA display with a resolution of up to 1920x1080 @ 60HZ
4	4, 8 channels of controlled computer input interface	Connect the controlled 4-and 8-way KVM dedicated cable interfaces, and connect with the connecting cables using the corresponding computer interfaces.
5	Extended KVM Interface	Connect with other KVM module special interface of the company

## Chapter II Hardware Installation

### Stacking and Installation

The KVM switcher can be placed on any suitable plane and is sufficient to safely support the device with the weight of additional connecting wires; Please make sure that the plane is clean and there are no other sundries that will affect the ventilation and normal operation of the switch.



### Single Device Installation

---

**Note:** Before installing KVM connection cables, please confirm that 12V power supply is switched on to LCD KVM device to ensure that the detection circuit inside the device takes effect. In order to prevent device damage during installation, please confirm that all installed device has good grounding protection.

---

To install a single-level KVM, refer to the following online diagram (the number corresponding to the online diagram indicates the sequence of steps) and perform the following:

1. First, connect one end of the power connection line of the external power adapter to the device power jack, and the other end to the AC power jack or PDU power jack.
2. Plug your USB keyboard and mouse into the USB control terminal connection port on the backplane of the switch.
3. Connect the video signal line of the VGA display to the VGA control port and turn on the power supply.

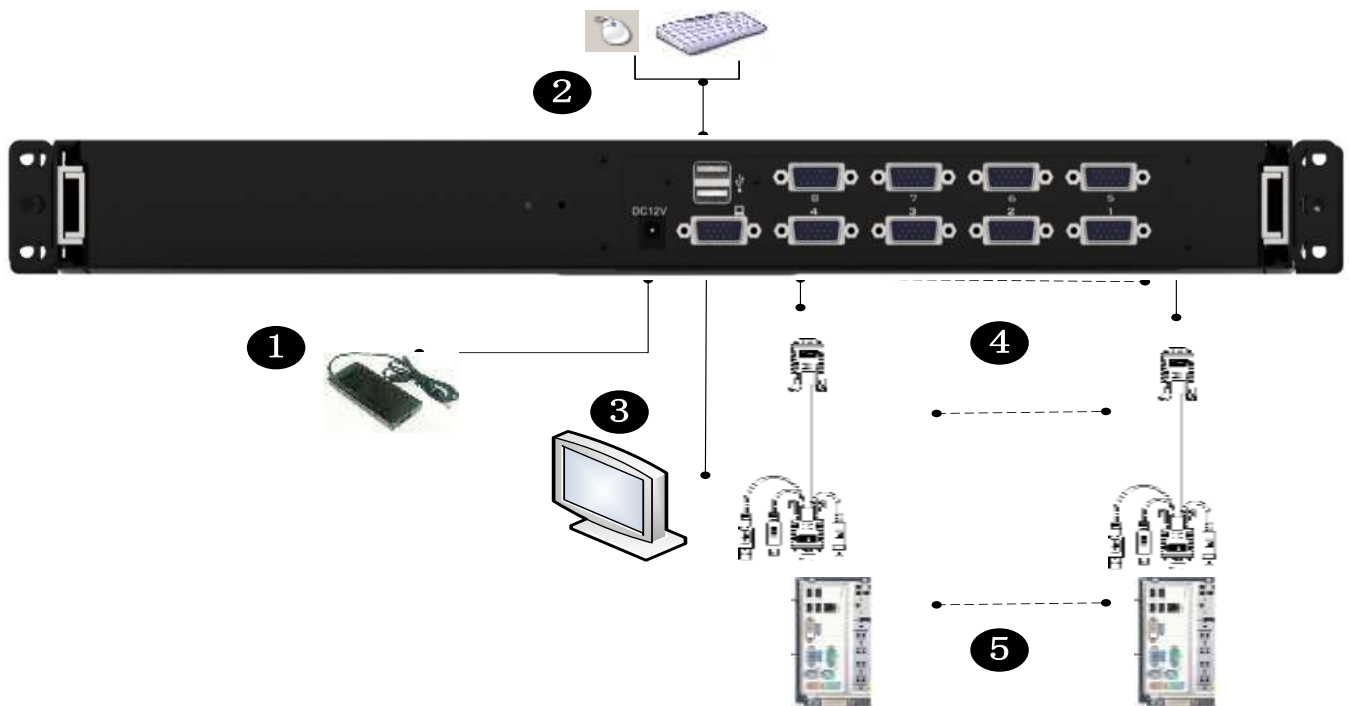
4. Terminate the KVM dedicated cable separate VGA connection into the KVM corresponding interface. The number of KVM ports can be 1, 4, or 8.
5. Connect the KVM cable VGA and keyboard mouse (USB or PS2) connector to the VGA output interface of the controlled computer or server and the keyboard mouse interface of USB or PS2.

---

**Note:**

The controlled computer is connected to the keyboard. If the mouse is a USB interface, the heat engine can connect the keyboard. If the PS2 interface needs to be connected in the shutdown state of the controlled computer, and then the computer is turned on. Otherwise, the keyboard and mouse device of the PS2 cannot be recognized.

---



Single Device Installation Schematic Diagram



## LCD KVM All-in-One Product Schematic Diagram

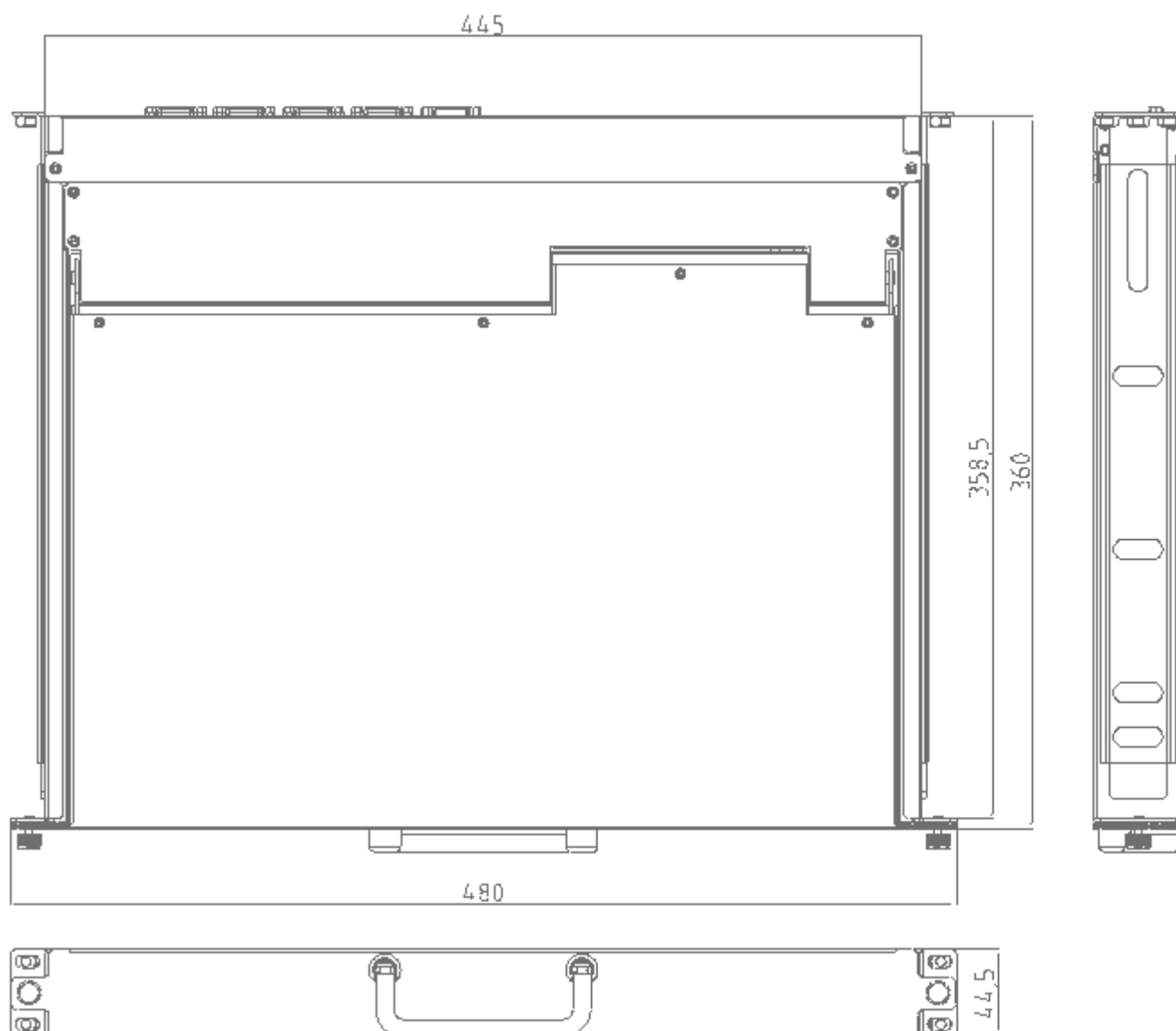
8-port product closure pattern



8-port product opening pattern



## Mechanical Dimension Drawing of Products

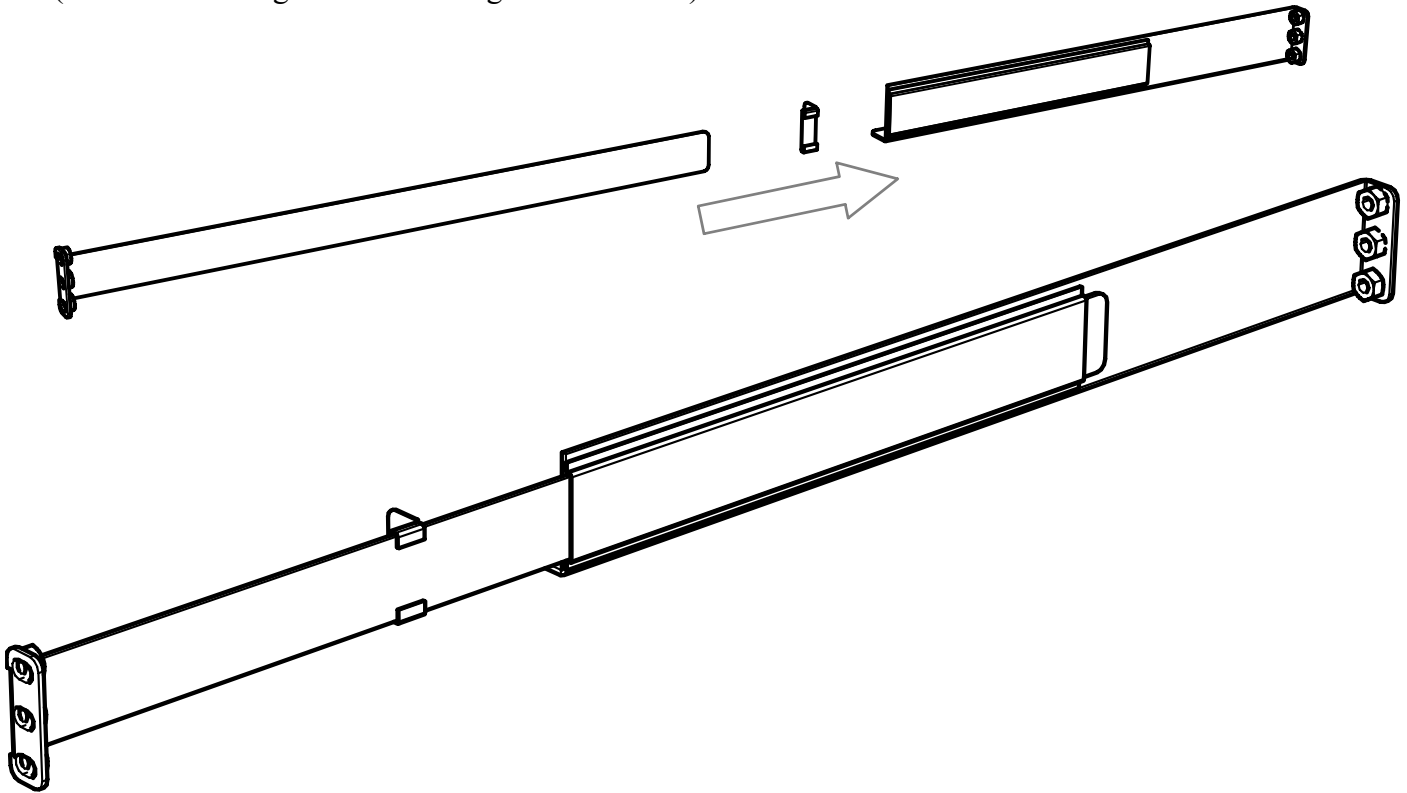


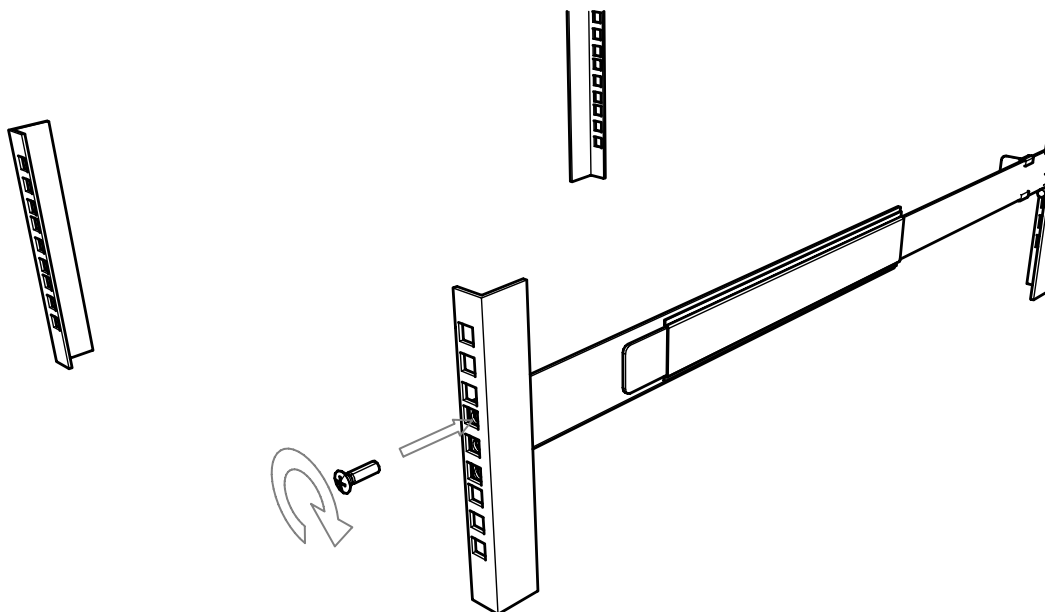
## Standard Rack Mounting

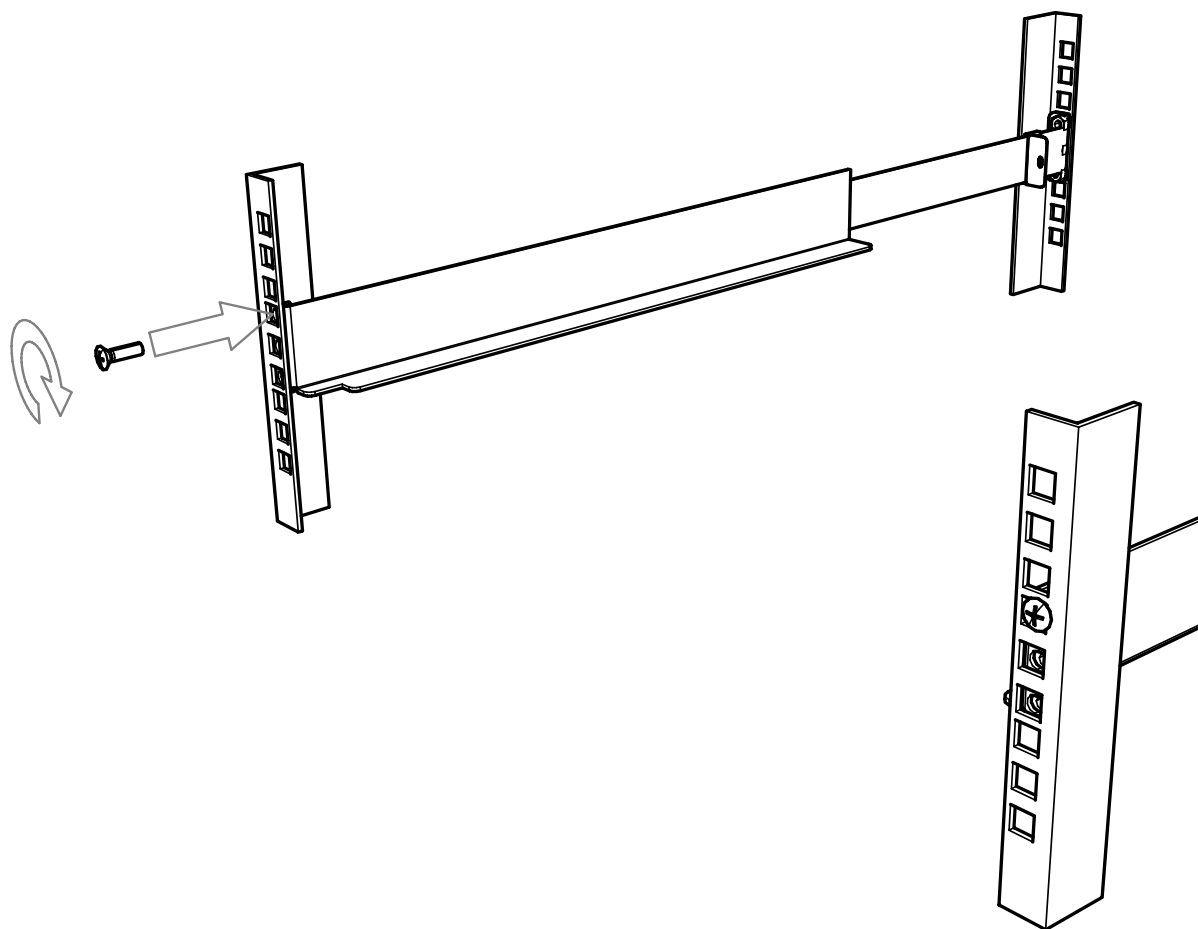
1. Take out the mounting bracket and pull the bracket rear lug out of the bracket. Take out the rear lug from the spare parts bag and adjust the direction of the lug according to the installation drawing. Pass the pulled-out rear lug through the lock lug and fit the lug into the joist again. Install cabinet Installation depth Adjust bracket length.
2. Place one end of the bending belt nut of the mounting bracket on the inside of the cabinet mounting column to align with the mounting hole of the cabinet mounting column, and use screws to fix the mounting column and the mounting bracket.
3. Adjust the length of the rear plug lug (pull out or insert it from the mounting bracket), place one end of

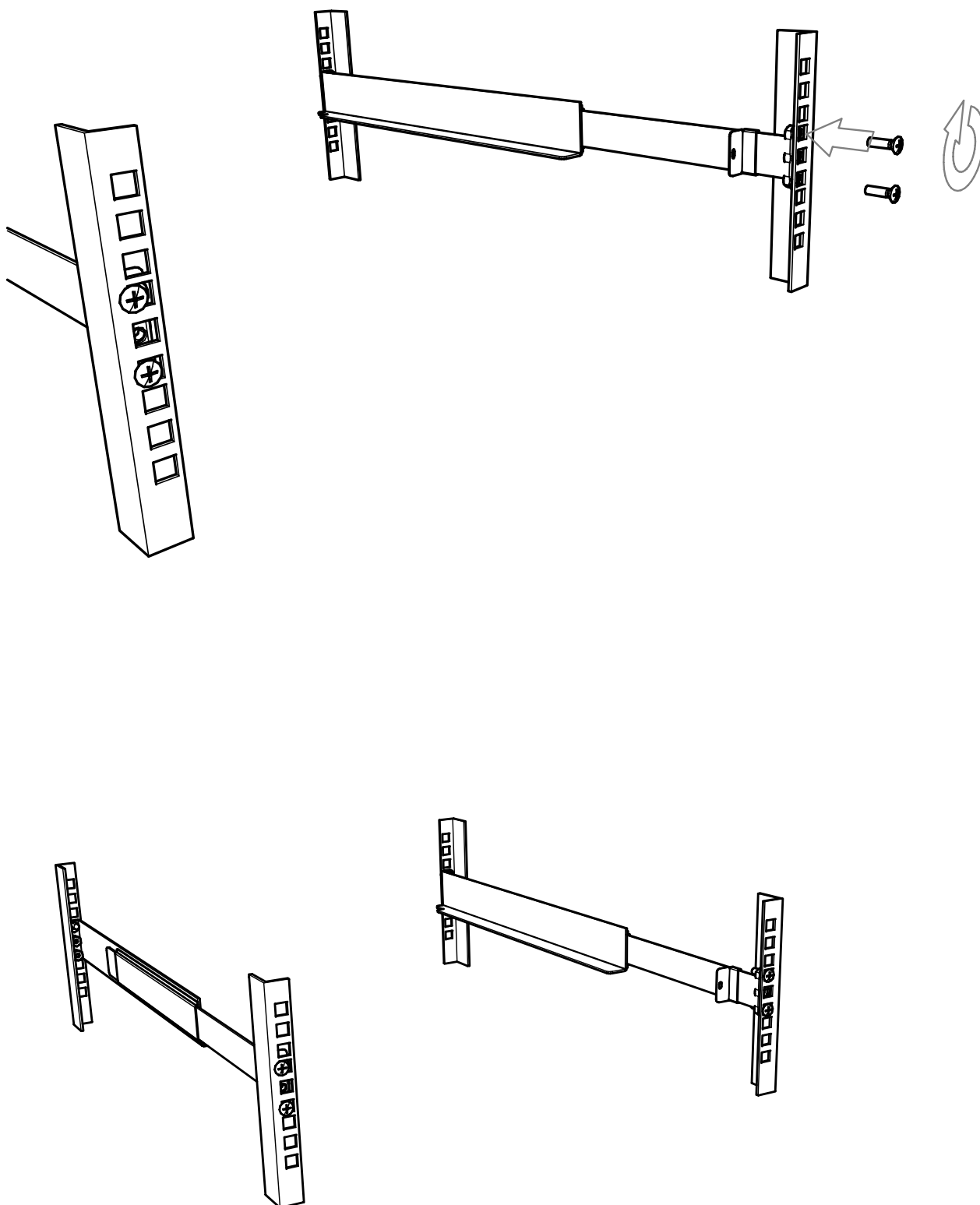
the rear plug bent with nut on the inside of the cabinet mounting column, and fix it with screws.

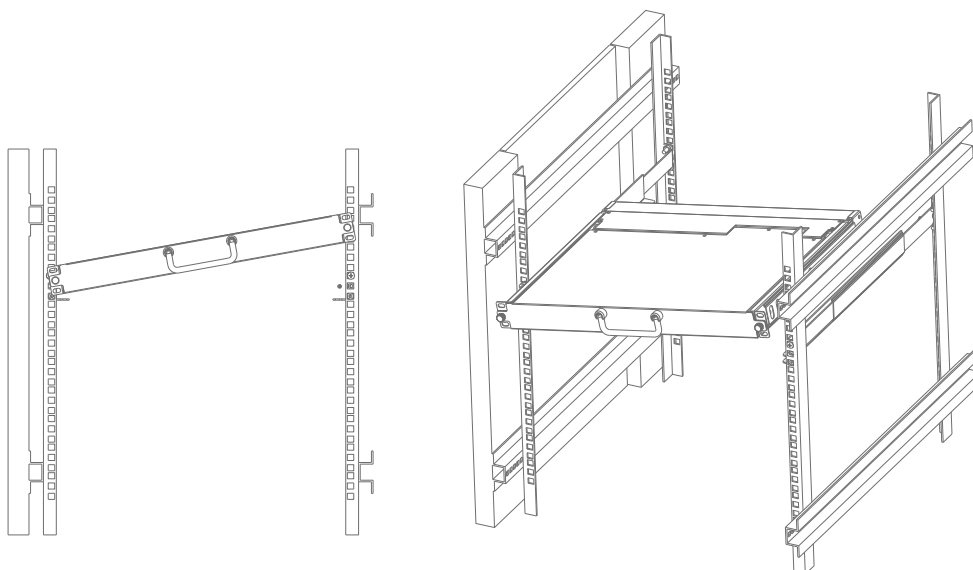
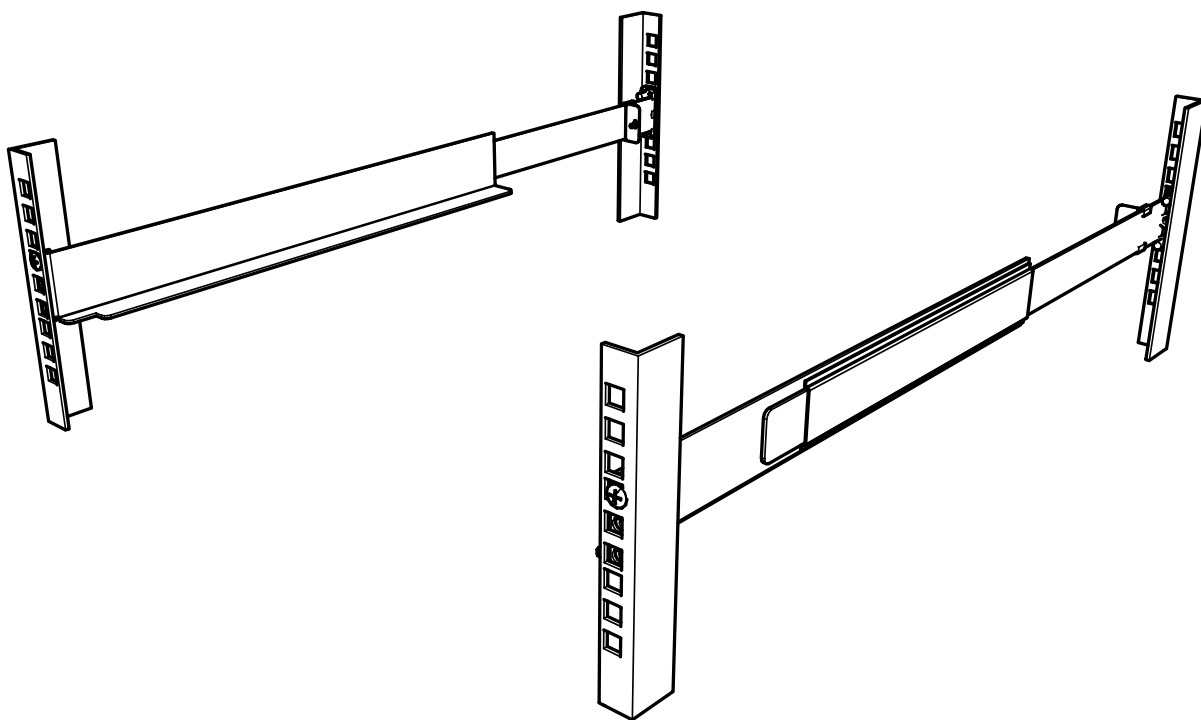
4. After the bracket is installed, place the LCD host on the bracket and slowly slide inward until the entire LCD host is loaded into the cabinet.
5. The front mounting hole of the LCD host is fixed with screws to the cabinet mounting column and mounting bracket, and the rear end of the LCD host is fixed with screws provided by the accessory package. (See the following installation diagram for details)

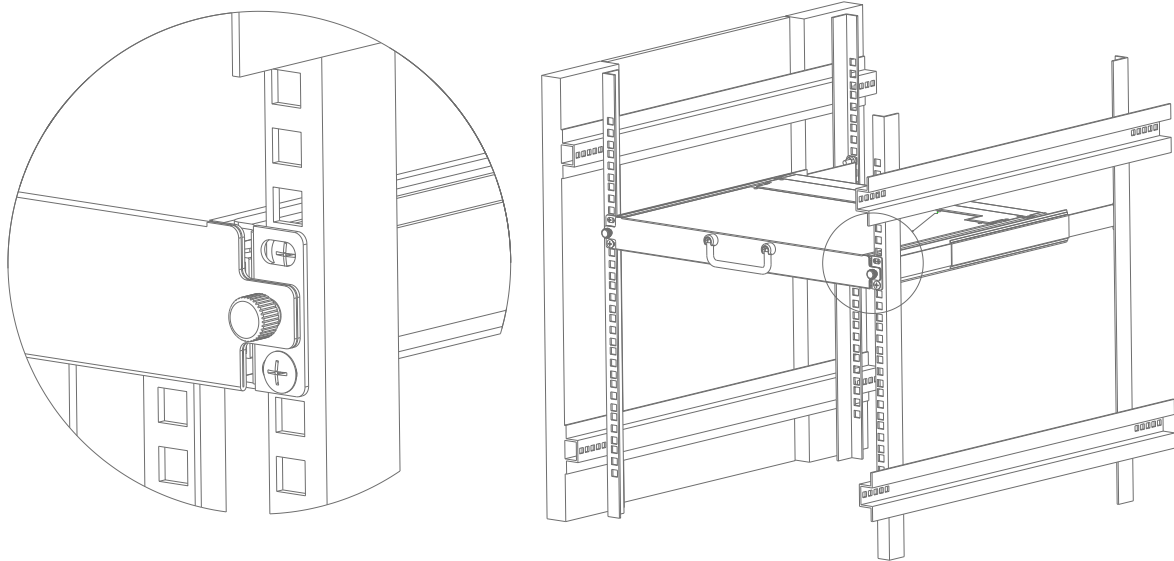














## Chapter III Basic Operations

### Hot Plug

---

KVM switcher supports hot plug function, which can remove and plug back components by unplugging the cable connected to the computer connection port without turning off the switch. In order for the hot plug function to work properly, please follow the following steps:

#### Hot Plug PC Connection Port

In order for the OSD menu to change according to the KVM's connection port, you must reset the OSD menu to display the latest connection port information, the menu settings of the OSD. Please refer to the description of functions and usage in the relevant sections of the OSD menu for more information.

---

---

Note: If the computer's operating system does not support hot plug, this function may not work properly.

---

---

#### Hot Plug Control End Connection Port

This product also provides the function of hot plug of keyboard, mouse and display at the control end. This product provides keyboard and mouse interfaces of two interface types. Users can select the corresponding device connection types according to the usage situation and carry out corresponding control operations.

---

---

Note: If you connect USB and PS2 keyboard and mouse devices at the same time, please do not use both types of devices at the same time, otherwise, the keyboard and mouse response of the controlled computer device may be abnormal.

---

---

### Connection Port Selection

When the KVM switcher is in use, you can choose two ways to quickly switch to any computer connected to the KVM: local OSD menu screen selection and remote user WEB interface selection.

#### Local OSD Menu Screen Selection

Local users can select and switch ports by enabling OSD menu through the connected USB keyboard hotkey. The default startup hotkey is "CTRL" + "CTRL". The cursor of the menu can be moved by using the direction keys of the keyboard. (See the section on OSD Operations for more information.)

## Power Shutdown and Restart

If you need to turn off the power to the KVM switch, do the following before turning it back on:

- 1、 Turn off the power switch connected to the KVM.
  - 2、 Turn off all computers connected to the KVM switch.
  - 3、 Wait approximately 10 seconds before reconnecting the power to the KVM switch.
  - 4、 Turn on the computer.
- 

**Note:** If the KVM connection cable of the PS2 you selected is connected to the controlled computer, the PS2 connection cable must be connected to the controlled computer before restarting, and the power supply is turned on, otherwise the keyboard and mouse will not operate normally.

---

## Chapter IV OSD Operation

### OSD Introduction

---

OSD on screen display function on screen display operation mode carries out KVM device setting, connection device switching selection and other operations, and completes device control through keyboard operation. All programs must start from opening OSD main screen.

### OSD Login

Before operation, you need to access the USB interface keyboard, mouse and a VGA interface monitoring screen at the local end of this product, then enable OSD interactive menu through the hot key action of the keyboard, and complete the setting and modification of corresponding functions through the operation of the monitoring screen and keyboard. If you have set the user and password login, you need to use the correct user name and login password to enter the OSD menu screen. The default OSD user name is: admin and the password is: admin. Users can make modifications in the User Edit Options.

### OSD Hotkey

By default, you can type the "CTRL" key twice to display the OSD menu on the screen of the controlled display, and you can see the relevant connection information and status information of the controlled computer connected to the KVM switch.

---

**Note:** You can change the keyboard hotkey started by the OSD menu according to your needs. This product provides 4 sets of optional OSD menu hotkey combinations, and you can select according to your needs (please refer to the detailed description of the setting function of the OSD menu.)

---

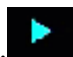
## OSD Main Menu

When you start OSD, a picture similar to the following figure will appear:



- ◆ The "F1", "F2", "F3", "F4", "F5" and "F6" at the bottom of the screen are the function settings of OSD menu, and the corresponding function operations and settings are carried out through the corresponding keys of the keyboard.
- ◆ After entering the OSD main screen, the port number where the light bar in the middle of the screen stays is the port number of the currently selected controlled computer. You can select the port by using the "" "" of the keyboard. After confirmation, please press the "Enter" key to select the switch port.
- ◆ If you want to exit the OSD menu interface, you can perform the exit operation through the "Esc" of the keyboard.
- ◆ To move a row up and down in the list, use the "" "" direction key. If the number of rows in the list is greater than the number that the screen can display, the screen scrolls.

## OSD Main Menu Title

Title	Description
PN	This column shows the port numbers for all ports. The simplest way to access a specific computer is to move the highlight bar to a port and press the "Enter" key. KVM will switch to the port computer selected by the cursor.
QV	This column displays the Quick Browse settings, which are displayed as. 
PC	This column represents the online port display status of the connected PC. If the computer on this port is powered up, a symbol will be displayed. ⚙
NAME	If the port is named a name, this column displays the port name.

## Introduction to OSD function keys

The OSD function key mainly provides the function of setting and controlling OSD. For example, you can quickly switch to any connection port, scan only the selected connection port, create or edit the name of the connection port, or adjust the OSD settings.

To start the OSD function key function:

1. Press any function key "F1", "F2", "F3", "F4", "F5" and "F6" at the bottom of the main screen to type the function key from the keyboard.
2. Move the selection column to the option on the submenu that appears, and then press the "Enter" key.
3. Press the "Esc" key to return to the previous menu.

### F1 GOTO:

Press the "F1" key to start the GOTO function, which allows you to switch directly to the connection port by typing the port name or its port number.



1. Use the name method, move the cursor to the "NAME" option through the keyboard key, and then press the "Enter" key. The "NAME" input bar box appears at the lower end of the window. You can enter the name of the port to be switched in the bar box, and then press the "Enter" key. The KVM switcher will directly switch to the corresponding port computer of the input name.
2. Using the port connection method, move the cursor to the "PN" option through the keyboard key, and then press the "Enter" key. The input bar box of "PN" appears at the lower end of the window. You can enter the serial number of the port to be switched in the bar box, and then press the "Enter" key. The KVM switcher will directly switch to the corresponding computer of the input port serial number.

---

**Note:** 1. You can enter the complete name or number, and the screen will prompt for invalid input. You cannot perform the corresponding switching selection operation until you exit or re-enter correctly.

2. In the "PN" port input box, only numbers are allowed to be input. If other characters are input, they will be

regarded as invalid input, and the warning sound from the device can be heard.

Return directly to the main menu without making a selection, and press the "Esc" key to operate.

## F2 SCAN

Press the "F2" key to start the SCAN function. The SCAN function allows KVM device to automatically switch connection ports at regular intervals. You can set and view the connection ports according to the set time intervals. After scanning, please press the "Space" key to exit the scanning mode. The default factory setting is 5 seconds for scanning the two ports (please refer to the description of the "F6" function settings for modification).


## F3 LIST

Press the "F3" key to start the LIST function, which can display the ports according to the mode that the user wants to display, making it convenient for the user to quickly and selectively view the corresponding ports according to common habits. The modes provided are shown in the following table:



Setting	Function Description
ALL	The main window displays all port information, arranged by port sequence number.
QVIEW	The main window displays only the Quick Browse port information tagged QV.
POWERD ON	The main window displays only the port device information that is online.
POWERD ON + QVIEW	The main window only displays the Quick Browse port information of the online tag QV.
QVIEW + NAME	The main window displays only NAME-named and QV-tagged Quick Browse port information.
NAME	The main window displays only NAME named port information.

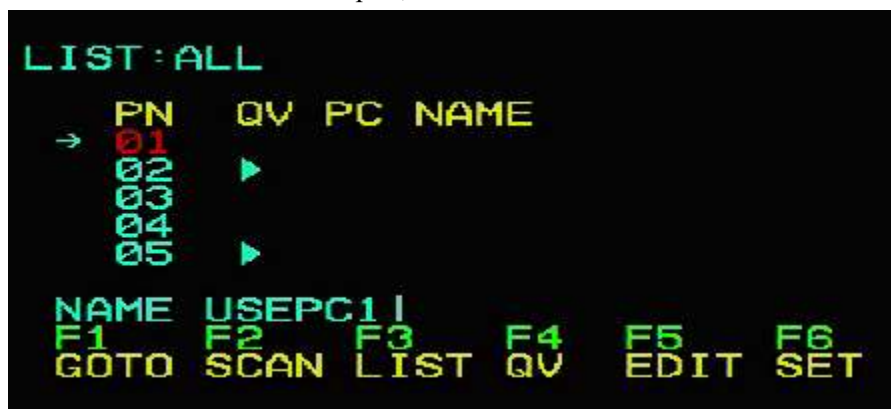
## F4 QV

Press the "F4" key to set or cancel QV on the port where the cursor stays. If the port has an icon , it means that the port is set to express browsing mode, and the set port information can be seen in QVIEW mode, otherwise it is a normal port.

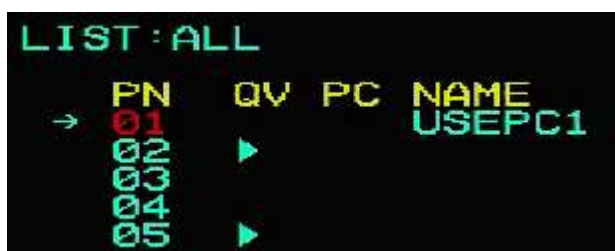


## F5 EDIT

Press F5 to set or edit the name of the current port,



The maximum number of characters that can be input is 15, which will take effect when the "ENTER" confirmation is completed.



## F6 SET

Press the "F6" key to provide the administrator with settings for the OSD menu. Setting and modifying related functions, such as port naming, display mode, switching hotkey adjustment, etc.



To change settings:

1. Move the selection bar to this option, and then press the "Enter" key.
2. After selecting an item, the sub-menu and the further options it provides will appear. To select, you can double-click the mouse or move the selection to the option, and then press the "Enter" key. An icon will appear before the selected option to indicate that the item has been selected. Its setting instructions are shown in the following table:

Setting	Function Description
OSD ACTIVATING HOTKEY	Startup hotkey selection for OSD menu, default is "CTL" + "CTL"
SWITCH HOTKEY	Port Switch Hotkey Selection
SCAN DURATION	Port Scan Interval Selection
SET PASSWORD	Set User Password
SET SUPER PASSWORD	Set Super Password
CLEAR THE NAME LIST	Clear Port Name
RESTORE DEFAULT VALUE	Restore factory default settings
LOCK CONSOLE	Local Password Login Settings

### ● OSD ACTIVATING HOTKEY





This function can set and change the startup shortcut hotkey combination of OSD menu. This device provides 4 hot key menu combinations: "CTRL" + "CTRL", "SCROLL" + "SCROLL", "ALT" + "ALT", "SHIFT" + "SHIFT". You can use the keyboard "↑" "↓" direction key to move the cursor to select as needed, and then press "Enter" key to save and take effect. The initial default is "CTRL" and "CTRL" as the startup hotkey of OSD menu.

---

**Note:** The set hotkey combination should not be the same as SWITCH HOTKEY, otherwise, the related operation and function switching will be affected. If you conflict with the shortcut keys of the user's application software, please make changes according to the shortcut keys shown in the list to resolve the conflict.

---

## ● SWITCH HOTKEY



This function can set the shortcut hot key for port switching. Users can directly select the port to be switched and skip the OSD display interface selection to facilitate users' shortcut operation. This function provides 4 hotkey combinations: "SCROLL" + "SCROLL" + "NUM", "CTRL" + "CTRL" + "NUM", "ALT" + "ALT" + "NUM", "SHIFT" + "SHIFT" + "NUM". You can use the keyboard "↑" "↓" direction key to move the cursor to select according to your needs, and then press the "Enter" key to save and take effect. The initial default is "SCROLL" + "SCROLL" + "NUM" as the hot key for port switching.

---

**Note:** The set hotkey combination should not be the same as OSD ACTIVATING HOTKEY, otherwise, the related operation and function switching will be affected. If you conflict with the shortcut keys of the user's application software, please make changes according to the shortcut keys shown in the list to resolve the conflict.

---

## ● SCAN DURATION



The change function can set the interval of port switching in SCAN mode. You can use the keyboard "" direction key to move the cursor to select as needed, and then press "Enter" key to save and take effect. The initial default is 5 seconds.

## ● SET PASSWORD



This function can set the function permissions of ordinary users. After the setting is successful, the user can only use this password to clear the operation settings of port names.

## ● SET SUPER PASSWORD



This function can set the administrator password. After the setting is successful, some important settings need the administrator password to be set and changed. Before the change, the previous password verification

needs to be correctly entered before the new password can be entered. As shown in the following figure, the factory default administrator password is Admin.



## ● CLEAR THE NAME LIST



This function can clear the NAME settings of all ports. When this function is executed, it needs to verify the administrator's identity password to realize it. If the password is correct, a prompt will pop up: CLEAR ALL THE NAME? "N", enter "Y" for this action to take effect, and then enter keyboard "Enter" to confirm that it takes effect; To cancel this operation, you can enter "N" and then enter "Enter" to confirm the cancellation operation, or enter "Esc" on the keyboard to return directly.



```
F6: SET

SET PASSWORD
SET SUPER PASSWORD
CLEAR THE NAME LIST
→ RESTORE DEFAULT VALUE
LOCK CONSOLE

PASSWORD          I
↑      ↓      ESC  ENTER
UP  DOWN  EXIT  ACCEPT
```

```
F6: SET

    SET PASSWORD
    SET SUPER PASSWORD
    CLEAR THE NAME LIST
→  RESTORE DEFAULT VALUE
    LOCK CONSOLE

RESTORE DEFAULT VALUE?[N]
↑   ↓   ESC   ENTER
UP  DOWN EXIT  ACCEPT
```



# Appendix

## Safety Instructions

---

### General

- ◆ This product is for indoor use only.
- ◆ Please read all the instructions and use them for future reference.
- ◆ Follow all warnings and instructions on the equipment.
- ◆ Do not place this equipment on any unstable plane (such as carts, shelves, tables, etc.). If this equipment falls, it will be built into serious damage.
- ◆ Do not use this equipment near water.
- ◆ Do not place this equipment next to or above the radiator or heating equipment.
- ◆ The enclosure of this equipment is equipped with slots for heat dissipation and ventilation. In order to prevent overheating during operation, do not block or cover the openings.
- ◆ This equipment should not be placed on a soft surface (such as bed, sofa, blanket, etc.), which will block the fan opening, nor should it be placed in a sealed environment unless proper ventilation has been provided.
- ◆ Do not spill any liquid on the equipment.
- ◆ Before cleaning, the power supply of this equipment must be unplugged from the socket on the wall. Please do not use any liquid or foam wiping agent, please use wet cloth for cleaning.
- ◆ Please use this equipment according to the power type on the label. If you are not sure whether the power type is available, please contact your distributor or local power company.
- ◆ This equipment is designed and applied to IT power distribution system with 100V ~ 230V phase-to-phase voltage.
- ◆ In order to prevent damage to your equipment, it is very important for all equipment to be properly grounded.
- ◆ Do not place anything on the power cord or connection line, and arrange the wiring path of the power cord and connection line to avoid tripping over it.
- ◆ If the equipment uses an extension line, ensure that the total power of all products using the line does not exceed the current carrying capacity of the line. Ensure that the total current of all products plugged into wall sockets does not exceed 15A.
- ◆ Please select equipment such as sudden wave suppressor, regulator or uninterruptible power system (UPS) to help prevent your system from experiencing sudden and instantaneous increase and decrease of power.
- ◆ Please properly fix the connecting wire and power cord of the system to ensure that nothing presses on the cable.
- ◆ Do not insert anything into the machine through the slots in the housing, which may come into contact with dangerous voltage points or cause short circuit of parts and lead to the risk of fire or electric shock.
- ◆ Please do not try to repair this equipment by yourself, please find qualified service personnel to obtain support services.



- ◆ If any of the following circumstances occur, please unplug the power supply of this equipment from the wall socket and hand it over to qualified service personnel for repair.
  - Damaged or worn power cord or plug
  - Liquid is sprinkled into the equipment
  - The equipment was drenched by rain and water
  - The equipment has fallen or the enclosure has been damaged
  - The functions of this equipment have obviously changed
  - After following the operation instructions, the equipment cannot operate normally
- ◆ Only the control functions covered in the operation instructions are adjusted, and other improper operations may cause damage, so that more extensive operations by qualified personnel are required to repair.

## Frame Installation

---

- ◆ Before mounting the rack, make sure that the fixing equipment is safely fixed to the rack and extends to the ground, and the weight of the whole rack can be scattered on the ground. Before starting the work of the rack, install the front and side fixing equipment on a single rack or install the front fixing equipment on a combined plurality of rack.
- ◆ Please install the rack from bottom to top and install the heaviest thing first.
- ◆ Ensure that the rack is smooth and stable when extending the equipment out of the rack.
- ◆ Take care when releasing the spring latch against the equipment slide rail and sliding the equipment into the rack. The track of the slide rail may clip your finger.
- ◆ After installing the equipment on the rack, carefully unfold the slide rail to the locked position, and then slide the equipment into the rack.
- ◆ Do not overload the AC supply branch circuit that supplies power to the rack. The carrying capacity of the whole rack shall not exceed 80% of the branch circuit capacity.
- ◆ Please ensure that all equipment used on the rack-including power outlets and other power connectors-is properly grounded.
- ◆ Please make sure that proper air flow is provided for the equipment on the rack.
- ◆ Please ensure that the operating temperature of the rack environment does not exceed the maximum operating temperature of the equipment set by the manufacturer.
- ◆ When you are maintaining other equipment on the rack, do not step on or stand on any other equipment.
- ◆ **WARNING:** Slide/rail (LCD/KVM) mounting equipment cannot be used in support frame or work area.

## Product Specification Parameters

### VGA Interface Family Short LCD KVM Switcher Parameters

Functions			NR-MSR2704S	NR-MSR2708S	NR-MSR2701S
Number of computer connections	Direct		4	8	1
	Maximum cascade		64	128	16
Switch Mode			OSD menus, panel keys, hotkeys,		
OSD Toggle Default			Ctrl + Ctrl		
Hotkey Switch Default			Scroll + Scroll + Numbers (01-08)		
Connector	Control Port	Display	17 "Widescreen LED Display		
		Keyboard	1 x USB Type A female head		
		Mouse	1 x USB Type A female head		
		Extension Interface	1 x USB Type A Female Head (Front Extended Keyboard, Mouse Interface)		
	Computer port	Monitor, keyboard and mouse	4 x VGA DB15 Blue Female Head	8 x VGA DB15 Blue Female Head	1x VGA DB15 Blue Female Head
	Power Supply		1 x DC jack		
	Power Supply Specifications		DC 12V4A		
Switchover switch	Connection Port Selection		KVM Operation Panel Numeric Keys		
	KVM Reset		KVM Operation Panel Function Keys		
LED indicator	Computer Select Port		Dual-digit digital tube display LED indicator lamp		
	Computer Online Port		4 x Red	8 x Red	1 x Red
Analog mode	Keyboard and mouse		USB, PS2		
Mouse			Touchpad Mouse		
Keyboard			101-key chocolate ultra-thin keyboard		
Maximum Resolution Video			1920 x 1080 @ 60HZ Local		
Scan Interval			3, 5, 10, 15, 20, 30, 40, 60 seconds (default 3 seconds)		
Operating environment	Operating temperature		0-50 °C		
	Storage Temperature		-20-60 °C		
	Humidity		0-80% RH, no coagulation		
Body Attribute	Chassis		Metals		
	Product Size		360 x 445 x 45mm		
	Appearance Color		Black		
	Weight		9.96 KG		



## Warranty Conditions

---

The maximum compensation borne by the Company shall not exceed the amount paid by the customer for the product. In addition, the Company does not bear the direct, indirect, special, accidental or consequential damages caused by the use of this product or the CD and documents attached to this product.

The Company will not warrant, express, imply or legally declare the contents and purposes of this document, and specifically deny its quality, performance, marketability or applicability for special purposes.

Distributors reserve the right to modify or upgrade equipment or documents, and are not obliged to notify any individual or individual of the contents of the modification or upgrade. For further enquiries, please contact the distributor.